

BANK INTERIOR

BCC BANK
HSBC
WORLD BANK
STANDARD BANK
ING BANK
UOB BANK
DEUTSCHE BANK
CITIGOLD SELECT

BANK OF MOSCOW
I-BANK
BANCOLOMBIA
LLOYDS BANKING GROUP
ABU DHABI ISLAMIC BANK
BNP PARIBAS BANK
ONECALIFORNIA BANK
ICBC

HI-DESIGN
PUBLISHING



BNP PARIBAS BANK



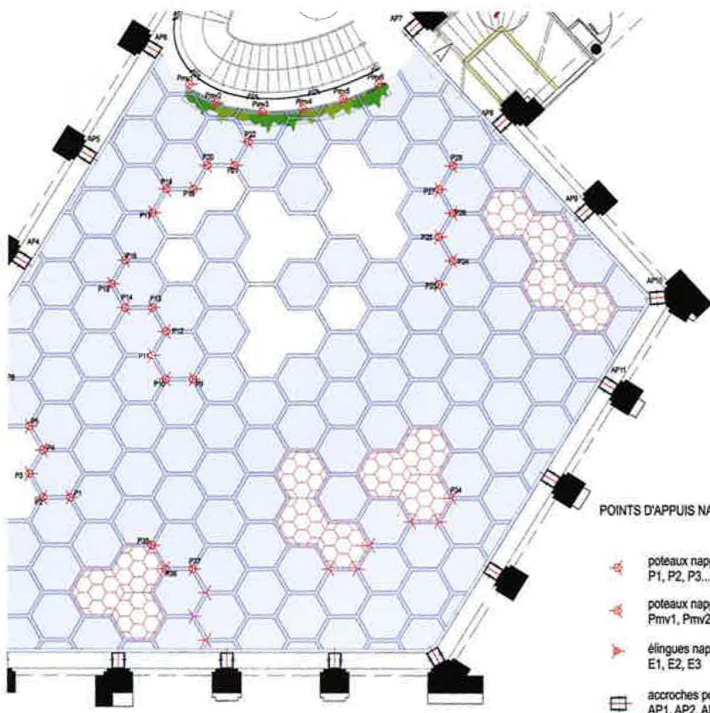
Design Company Zoex Architects






Description

A user-friendly place set around a vast lounge dedicated to “active waiting” or leisure time. The 2 Opera defies the usual aesthetic codes of the banking world. This laboratory-shop where innovation and new customs are encouraged allows a new vision of the banking relationship. The transparent walls allow for an understanding of the building’s broad volume while the specific harmonious or contrasting color schemes make the different living areas easily identifiable one from the other. Furthermore, Zoevox has chosen a few historical references (honeycombed ceiling, sophisticated mirror work) to make this unusual space an elegant link between past and future. Over almost 1,000 square meters, living areas with contrasting colors and furniture are designed to enhance the relationship between the bank and its clients, while stimulating a pro-active attitude in the latter. At 2 Opera, a creative scenography leads the client to discover the various services offered by Paribas in a playful and interactive way.

He can gather information on the stock-exchange on his own or with the help of an advisor. Private rooms are dedicated to more formal appointments. An additional temporary exhibition area as well as another exclusively dedicated to children completes this new offering entirely devoted to an innovative client experience, in a surrounding destined to encompass true French elegance. On both sides of the entrance hall, the particularly unusual vegetal design of the ATMs set the spirit of the self service area (cash withdrawals, change, cash deposits etc.). In the lock chamber towards the welcome area, two screens inserted into the walls and placed behind mirrors broadcast information in a most poetic way. The welcome desk of 2 Opera is a long central table around which advisors are at the disposal of clients and prospects for guidance and directions. On the left-hand side is the exhibition area bordered by red walls, and on the right-hand side lies the monumental staircase leading to the management’s offices.



POINTS D'APPUI NAPPE

-  poteaux nappe
P1, P2, P3...
-  poteaux nappe - mur végét
Pmv1, Pmv2, Pmv3...
-  élingues nappe
E1, E2, E3
-  accroches poteaux périph
AP1, AP2, AP3...



sections







